

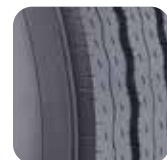
MRF STEEL MUSCLE TRUCK & BUS RADIAL TYRES										APPLICATION	REC. FITMENT	LOAD
Size/Pattern	Ply Rating	Rec. RIM	SW mm	OD mm	NSD mm	Load/Speed Index	Load / Inflation-Kgs / Kpa		SLR mm			
							Single	Dual				
S3K4												
8.25R20	16	6.5	235	987	16.5	137 / 135 K	2300 @ 860	2180 @ 860	454	HIGHWAY	DRIVE AXLE FOR TRUCKS	STANDARD LOAD
10.00R20	16	7.5	280	1055	17.5	146 / 143 K	3000 @ 830	2725 @ 830	489	HIGHWAY	DRIVE AXLE FOR TRUCKS	STANDARD LOAD
11.00R20	16	8.0	300	1097	19.5	150 / 147 K	3350 @ 830	3075 @ 830	503	HIGHWAY	DRIVE AXLE FOR TRUCKS / BUS	STANDARD LOAD
11R22.5 TL	16	8.25	282	1059	17.5	146 / 143 M	3000 @ 830	2725 @ 830	489	HIGHWAY	DRIVE AXLE FOR TRUCKS / BUS	STANDARD LOAD
SIT4												
8.25R20	16	6.5	235	981	13	137 / 135 K	2300 @ 860	2180 @ 860	454	HIGHWAY	STEER AXLE- TRUCK / ALL WHEEL-BUS	STANDARD LOAD
9.00R20	14	7.0	262	1020	13	141 / 139 L	2575 @ 790	2430 @ 790	466	HIGHWAY	STEER AXLE- TRUCK / ALL WHEEL-BUS	STANDARD LOAD
9.00R20	16	7.0	262	1020	13	142 / 140 L	2650 @ 830	2500 @ 830	466	HIGHWAY	STEER AXLE- TRUCK / ALL WHEEL-BUS	STANDARD LOAD
SIR4												
10.00R20	16	7.5	277	1055	14.7	146 / 143 K	3000 @ 830	2725 @ 830	489	HIGHWAY	STEER/TRAILER- TRUCK / ALL WHEEL-BUS	STANDARD LOAD
11.00R20	16	8.0	302	1084	14.7	150 / 147 K	3350 @ 830	3075 @ 830	503	HIGHWAY	STEER/TRAILER- TRUCK / ALL WHEEL-BUS	STANDARD LOAD
11R22.5 TL	16	8.25	282	1058	14.8	148 / 145 M	3150 @ 850	2900 @ 850	489	HIGHWAY	STEER/TRAILER- TRUCK / ALL WHEEL-BUS	STANDARD LOAD
295/80R22.5 TL	16	9.0	291	1048	15.5	152 / 148 M	3550 @ 860	3150 @ 860	484	HIGHWAY	STEER/TRAILER- TRUCK / ALL WHEEL-BUS	STANDARD LOAD
315/80R22.5 TL	18	9.0	312	1079	16.5	156 / 150 L (154 / 150 M)	3750 @ 825	3350 @ 825	498	HIGHWAY	STEER/TRAILER- TRUCK / ALL WHEEL-BUS	STANDARD LOAD
SIR4 PLUS												
295/80R22.5 TL	16	9.0	300	1046	15.5	152 / 148 M	3550 @ 860	3150 @ 860	484	HIGHWAY	STEER/TRAILER- TRUCK / ALL WHEEL-BUS	STANDARD LOAD
S3C8												
10.00R20	16	7.5	280	1060	21	146 / 143 K	3000 @ 830	2725 @ 830	489	REGIONAL ON/OFF	DRIVE AXLE FOR TRUCKS	OVERLOAD
11.00R20	16	8.0	300	1098	21	150 / 147 K	3350 @ 830	3075 @ 830	503	REGIONAL ON/OFF	DRIVE AXLE FOR TRUCKS	OVERLOAD
S3P4												
10.00R20	16	7.5	285	1068	20	146 / 143 K	3000 @ 830	2725 @ 830	489	HIGHWAY	DRIVE AXLE FOR TRUCKS	STANDARD LOAD
S1M4												
10.00R20	16	7.5	285	1065	18	146 / 143 K	3000 @ 830	2725 @ 830	489	HIGHWAY	ALL WHEEL -TRUCK AND BUS	STANDARD LOAD
12.00R20	18	8.5	315	1123	17	154 / 151 K	3750 @ 830	3450 @ 830	521	HIGHWAY	ALL WHEEL -TRUCK AND BUS	STANDARD LOAD
295/80R22.5 TL	16	9.0	303	1050	17	152 / 148 M	3550 @ 850	3150 @ 850	484	HIGHWAY	ALL WHEEL -TRUCK AND BUS	STANDARD LOAD
325/95R24	-	9.0	318	1215	16	162 / 160 K	4750 @ 850	4550 @ 850	557	REGIONAL	ALL WHEEL -TRUCK	OVERLOAD
S1L6												
12.00R24	18	8.5	315	1230	15.5	158 / 155 K	4250 @ 830	3875 @ 830	573	HIGHWAY & REGIONAL	ALL WHEEL -TRUCK AND BUS	STANDARD LOAD
12.00R24	20	8.5	315	1230	16	160 / 156 K	4500 @ 850	4000 @ 850	573	HIGHWAY & REGIONAL	ALL WHEEL -TRUCK AND BUS	OVERLOAD
12R22.5 TL	16	9.0	302	1080	15	150 / 147 L	3350 @ 830	3075 @ 830	503	HIGHWAY & REGIONAL	ALL WHEEL -TRUCK AND BUS	STANDARD LOAD
11R24.5 TL	16	8.25	284	1106	14	149 / 146 K	3250 @ 830	3000 @ 830	516	HIGHWAY & REGIONAL	ALL WHEEL -TRUCK AND BUS	STANDARD LOAD
S3D4												
295/80R22.5 TL	16	9.0	300	1050	17.5	152 / 148 M	3550 @ 860	3150 @ 860	484	HIGHWAY	DRIVE AXLE FOR TRUCKS	STANDARD LOAD
S1N4												
315/80R22.5 TL	18	9.0	318	1079	17.2	156 / 150 K	4000 @ 850	3350 @ 850	498	HIGHWAY	ALL WHEEL -TRUCK AND BUS	STANDARD LOAD
SSR1												
385/65R22.5 TL	-	11.75	380	1072	16	158 L 160 J	4250 @ 850 4500 @ 900	- -	494	HIGHWAY	STEER / TRAILER FOR TRUCK	STANDARD LOAD
S3G4												
315/80R22.5 TL	18	9.0	314	1088	20	156 / 150 K	4000 @ 850	3350 @ 850	498	HIGHWAY	DRIVE AXLE FOR TRUCKS	STANDARD LOAD
S3V8												
12.00 R20	18	8.5	315	1130	21	154 / 151 K	3750 @ 830	3450 @ 830	520	REGIONAL ON/OFF	DRIVE AXLE FOR TRUCKS	OVERLOAD

MRF STEEL MUSCLE TRUCK & BUS RADIAL TYRES



S3K4

Available sizes: 8.25R20, 10.00R20, 11.00R20, 11R22.5 TL
Rec. Fitment: Drive Axle For Trucks



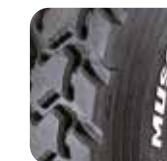
SIT4

Available sizes: 8.25R20, 9.00R20
Rec. Fitment: Steer Axle-Truck / All Wheel-Bus



SIR4

Available sizes: 10.00R20, 11.00R20, 11R22.5 TL, 295/80R22.5 TL, 315/80R22.5 TL
Rec. Fitment: Steer / Trailer-Truck / All Wheel-Bus



S3V8

Available sizes: 12.00 R 20
Rec. Fitment: Drive Axle For Trucks

MRF STEEL MUSCLE TRUCK & BUS RADIAL TYRES



SIR4 PLUS

Available sizes: 295/80R22.5 TL
Rec. Fitment: Steer / Trailer-Truck / All Wheel-Bus



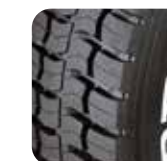
S3C8

Available sizes: 10.00R20, 11.00R20
Rec. Fitment: Drive Axle For Trucks



S3P4

Available sizes: 10.00R20
Rec. Fitment: Drive Axle For Trucks



S3G4

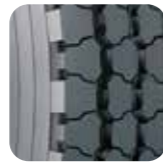
Available sizes: 315/80R22.5 TL
Rec. Fitment: Drive Axle For Trucks

MRF STEEL MUSCLE TRUCK & BUS RADIAL TYRES



SIM4

Available sizes: 10.00R20, 12.00R20, 295/80R22.5 TL, 325/95R24
Rec. Fitment: All Wheel - Truck And Bus



SIL6

Available sizes: 12.00R24, 12R22.5 TL, 11R24.5 TL
Rec. Fitment: All Wheel - Truck And Bus



S3D4

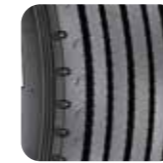
Available sizes: 295/80R22.5 TL
Rec. Fitment: Drive Axle For Trucks

MRF STEEL MUSCLE TRUCK & BUS RADIAL TYRES



SIN4

Available sizes: 315/80R22.5 TL
Rec. Fitment: All Wheel - Truck And Bus



SSRI

Available sizes: 385/65R22.5 TL
Rec. Fitment: Steer / Trailer For Truck



MRF TYRES
Tyres with Muscle

International Business Division, MRF Limited, New No. 114 (Old No.124), Greams Road, Chennai - 600 006.
Tel: 91 44-28292777. Fax: 91 44-28291844. Email: mrfexpo@mrfmail.com | Visit us at www.mrftyres.com



MRF TYRES
Tyres with Muscle

**STAY ON TRACK
WITH SUPERIOR
PERFORMANCE**
MRF TRUCK & BUS RADIAL TYRES

